

2018 - FLUID HANDLING AND MANAGEMENT CATALOGUE

HEAD OFFICE

JOHANNESBURG RANDBURG
TIME ACCESS AND AUTOMOTIVE SYSTEMS,
23 STEVENS ROAD, BLAIRGOWRIE,
RANDBURG,
South Africa

Tel: +27(0)11 326 4146
Fax: +27(0)11 781 4392
adriang@lantic.net
www.t-a-s.co.za
www.timeandautomotive.co.za

TAS



Air



Water



Oil



Grease



Chemicals - Please contact your sales consultant for details



Petrol



Diesel



Biofuel





Illuminating Paraffin

USABLE VISCOSITY CHART FOR TEMPERATURE

units: cSt = mm/s²

 = Viscomat 70
Viscomat 90
Viscomat DC 60/2

 +  = Viscomat 200/2
Viscomat 230/3
Viscomat 350/2
Viscomat DC 60/1
Viscomat DC 120/1

| Type of Oil | -15°C | -10°C | -5°C | 0°C | 5°C | 10°C | 15°C | 20°C | 25°C | 30°C | 35°C | 40°C |
|--------------------------|-------|-------|-------|-------|-------|-------|-------|------|------|------|------|------|
| 60 Spindle oil | 380 | 220 | 130 | 87 | 60 | 40 | 30 | 22 | 17 | 13 | | |
| 90 Refrigerator oil | 430 | 270 | 280 | 122 | 90 | 65 | 48 | 36 | 28 | 23 | | |
| 150 Refrigerator oil | 900 | 550 | 330 | 240 | 160 | 110 | 80 | 60 | 46 | 36 | | |
| 90 Turbine oil | 1100 | 700 | 440 | 290 | 200 | 140 | 100 | 75 | 63 | 40 | | |
| 150 Spindle oil | 2000 | 1000 | 600 | 360 | 230 | 150 | 100 | 75 | 55 | 46 | | |
| SAE - 10 W | 1150 | 700 | 460 | 300 | 220 | 150 | 110 | 85 | 65 | 36 | | |
| ISO 32 aut. Machines oil | 1800 | 1000 | 600 | 400 | 260 | 180 | 125 | 90 | 70 | 53 | | |
| 120 Machines oil | 3000 | 1600 | 1000 | 620 | 400 | 265 | 180 | 130 | 95 | 75 | | |
| 300 Refrigerator oil | 3300 | 1800 | 1000 | 700 | 420 | 280 | 190 | 130 | 95 | 75 | | |
| 140 Turbine oil | 3500 | 2000 | 1200 | 750 | 500 | 320 | 240 | 170 | 120 | 95 | | |
| SAE - 20 | 3500 | 2000 | 1200 | 800 | 530 | 370 | 260 | 190 | 140 | 105 | | |
| 160 Machine oil | 4300 | 2500 | 1400 | 900 | 600 | 400 | 285 | 190 | 140 | 105 | | |
| ISO 68 Lubricant | 5000 | 2800 | 1700 | 1100 | 650 | 400 | 300 | 210 | 150 | 130 | | |
| 180 Turbine oil | 5000 | 3000 | 1800 | 1050 | 700 | 460 | 320 | 220 | 160 | 120 | | |
| 200 Turbine oil | 6500 | 3800 | 2200 | 1300 | 800 | 550 | 360 | 260 | 180 | 135 | | |
| SAE - 80 Gear oil | 7000 | 4000 | 2400 | 1400 | 900 | 600 | 400 | 280 | 200 | 150 | | |
| SAE - 30 | 9000 | 5000 | 3000 | 1800 | 1150 | 750 | 500 | 340 | 240 | 180 | | |
| ISO - 100 | 11000 | 5500 | 3200 | 2000 | 1200 | 800 | 500 | 350 | 250 | 180 | | |
| SAE - 40 | | 8000 | 4500 | 2700 | 1600 | 1050 | 720 | 500 | 340 | 250 | | |
| ISO - 150 | 18000 | 10000 | 5500 | 3200 | 2000 | 1250 | 800 | 550 | 380 | 280 | | |
| SAE - 90 Gear oil | | | 7000 | 4200 | 2500 | 1800 | 1000 | 700 | 480 | 340 | | |
| SAE - 50 | | | 8000 | 5000 | 3000 | 1800 | 1200 | 800 | 530 | 380 | | |
| ISO - 220 | | | 10000 | 5500 | 3200 | 2200 | 1300 | 900 | 600 | 420 | | |
| SAE - 60 | | | | 9000 | 5500 | 3400 | 2000 | 1350 | 900 | 650 | | |
| ISO - 320 | | | 17000 | 9500 | 5500 | 3300 | 2100 | 1400 | 900 | 650 | | |
| SAE - 140 Gear oil | | | | 10000 | 6000 | 3800 | 2300 | 1400 | 1000 | 700 | | |
| ISO - 460 | | | | 14000 | 8000 | 4800 | 3000 | 1900 | 1100 | 900 | 620 | 460 |
| ISO - 680 | | | | | 14000 | 8000 | 5000 | 3000 | 2100 | 1400 | 950 | 680 |
| ISO - 1000 | | | | | | 14000 | 8000 | 5000 | 3100 | 2100 | 1500 | 1000 |
| ISO - 1500 | | | | | | | 14000 | 8000 | 5000 | 3100 | 2200 | 1500 |

The values in the table are only for reference purpose for this product and do not guarantee the viscosity of each oil.

CONTENTS

NOZZLES

| | |
|-----------------|---|
| Manual..... | 6 |
| Automatic | 7 |

FLOW METERS

| | |
|------------------------------|--------|
| Mechanical | 8,9,10 |
| Electronic | 11,12, |
| Bulk flow measurement | 13 |
| Flow meter accessories | 14 |

PUMPS

| | |
|-------------------------|----------|
| Pneumatic..... | 15,16 |
| Diaphragm | 17,18 |
| Hand | 19,20 |
| Electrical | 21,22,23 |
| Pumps accessories | 24,25,26 |

HOSE REELS

| | |
|-----------------|-------|
| Hose Reels..... | 27,28 |
| Hoses | 29 |

DRAINERS

| | |
|---------------|----|
| Gravity | 30 |
| Suction | 31 |

DISPENSERS

| | |
|--------------------|----|
| Self Service..... | 32 |
| Manual & Air | 33 |

SYSTEMS

| | |
|--------------------------------|-------|
| Fluid Management Systems | 34,35 |
|--------------------------------|-------|

LIQUIP EQUIPMENT

| | |
|---------------------------------|-------|
| Liquip Terminal Equipment | 36,37 |
| Liquip Tanker Equipment | 38,39 |

NOTES

| | |
|-------------|----------|
| Notes | 40,41,42 |
|-------------|----------|

NOZZLES

MANUAL • AUTOMATIC

Intended application is key when deciding which nozzles to select. Additional factors such as type of fluid, its temperature and expected flow rate will also determine the nozzle type. There are various types and brands to suit different specification requirements and budgets such as heavy duty nozzles, automatic shut off nozzles, manual refuelling nozzles, high-flow versions appropriate for aviation purposes, amongst others.

We also supply nozzle meters, hoses, hose reels, dispensing units and pumps to complement the nozzles.

Our expert team will assist you in finding the right nozzles for your purpose.

Piusi Aluminium Manual Nozzle

- Cast aluminium body. BSPF swivel inlet
- Can be used with gravity feed tanks or electric pumps
- Integral hook for tidy storage when not in use
- Max. Pressure 3.5bar
- Available with 1" swivel brass hose tail

| Description | Specification |
|---------------------------------------|--------------------|
| 1" Nozzle c/w swivel | Flow rate 120L/min |
| 1" Nozzle c/w swivel & plastic shroud | Flow rate 150L/min |



Piusi Plastic Manual Nozzle without Latch

- Plastic body. 3/4" BSPF swivel inlet
- Integral hook for tidy storage when not in use
- Max. Pressure 3.5bar max
- Available with 1" swivel brass hose tail

| Description | Specification |
|------------------------------------|-------------------|
| 3/4" Plastic nozzle c/w swivel | Flow rate 80L/min |
| 3/4" Plastic nozzle c/w hosedetail | Flow rate 80L/min |



Aluminium Heavy Duty 1 1/2" Nozzle

- Cast aluminium body
- Ideal for refuelling very large vehicles & heavy plant equipment
- For use with gravity or electric pumps
- Complete with 1 1/2" BSPF swivel inlet
- Max. pressure 87psi (6bar), max. flow 280L/min.
- Manual or automatic shutoff options available

| Description | Specification |
|-------------|-----------------------|
| PSA120-40MM | Automatic 40mm nozzle |
| PS1250-MAN | Manual 40mm nozzle |



Piisi Easy Oil Delivery Nozzle c/w Optional Meter



- Supplied with flexible or rigid spout c/w anti drip tip
- ½" BSPF swivel inlet
- Max. Pressure 1015psi (70bar)
- Ergonomic handle grip & trigger
- Balanced valve with suction filter
- Option K400 flow meter attached
- Accuracy +0.5%. Not approved for resale



Automatic Filling Nozzles

- Automatically shuts-off the flow of fuel when vehicle tank is full
- 3 position stay open latch. Disable function variant available
- Option sizes & flow rates
- BSPF swivel inlet
- Max. pressure 50psi (3.5bar)
- For use with electric pumps only



| Description | Specification |
|------------------------|--------------------------|
| A60 Nozzle c/w swivel | ¾" 60L/min Unleaded only |
| A80 Nozzle c/w swivel | 1" 80L/min |
| A120 Nozzle c/w swivel | 1" 120L/min |

K500 Digital Preset Hose End Meter

- Presettable dispensing of motor oil max viscosity 2000cst
- Supplied with rigid spout & anti drip tip. ½" BSPF swivel inlet
- Changeable unit of measure. 6 digit non resettable totaliser
- Flow rate 1 - 30L/min. Battery operated, 4 AA batteries supplied
- Max. pressure 70bar
- LCD display, 4 digits, digits 11.5mm high
- Accuracy ±0.5%. Not approved for resale



¾" HD Oil/Diesel Delivery Nozzles

- Supplied with Flex or rigid spouts fitted with non-drip tips
- Flowrates up to 85Lmin
- Pressure rating of 100bar
- ¾" swivel entry
- Viton seals



| Description | Specification |
|-------------|--------------------------------------|
| RM33151 | ¾" HD 80L/min handle, flexible spout |
| RM33152 | ¾" HD 80L/min handle, rigid spout |
| RM37776 | ¾" HD 70L/min handle, flexible spout |

FLOW METERS

MECHANICAL • ELECTRONIC • BULK • TURBINE

The basis of good flow meter selection is a clear understanding of the requirements of the particular application. Evaluate the nature of the fluid, air, or gas and ask these key questions before selecting a flowmeter:

- What is the fluid being measured by the flow meter (air, water, gas etc.)?
- Do you require rate measurement (l/hr) and/or totals (volume measurement) from the flow meter?
- If the liquid is not water, what viscosity is the liquid? (refer to viscosity chart opposite contents)
- Is the fluid clean?
- What is the minimum and maximum flow rate for the flow meter?
- What is the minimum and maximum process pressure?
- What is the minimum and maximum process temperature?
- Is the fluid chemically compatible with the flow meter parts?
- If this is a process application, what is the size of the pipe?

If you are uncertain about your requirements, please contact us for assistance and information about selecting the correct flow meters and proper usage.

Fillrite 1" Flow Meter

- Robust nutating disc flow meter shows up to 999 litres
- 20 – 75L/min. 1" BSPF ports & inlet strainer 250 micron
- Max. pressure 3.5bar (gravity flow)
- Accuracy of $\pm 1\%$ with adjustable calibration
- Aluminium housing & cover
- 3 digit register. 6 digit non resettable totaliser
- Front face can be rotated in 90° increments
- Option 10:1 pulser, fitted to meter on request
- Not approved for resale



| Description | Specification |
|-----------------------|-----------------|
| 806 Three digit meter | 1" flow 75L/min |
| Option -0.1 Pulse | As above |

Fillrite 1½" Flow Meter & High Capacity

- Robust nutating disc flow meter shows up to 9999 litres
- 25 - 150L/min. 1½" BSPF ports
- Max. pressure 3.5bar (gravity flow)
- Accuracy of $\pm 2\%$ with adjustable calibration
- Aluminium housing & cover. Satin coated version available
- 4 digit register. 7 digit non resettable totaliser
- Front face can be rotated in 90 degree increments
- Option inlet strainer & 0:1 pulser, fitted to meter on request
- Not approved for resale



| Description | Specification |
|----------------------|-------------------|
| 901 Four digit meter | 1½" flow 140L/min |
| Option -0.1 Pulse | As above |

MECHANICAL FLOW METERS



Proflow OGM PD Flow Meter

- Suitable with Petrol, Diesel, IP or Biodiesel compatible chemicals
- Robust oval gear flow meter with litre registration
- 25mm to 50mm BSPF ports
- Low pressure drop
- Max. pressure 1 & 1/2" = 34bar, 2" = 18bar
- Aluminium housing & cover, resin rotors
- 6 digit non resettable register. 4 digit resettable totaliser
- Front face can be rotated in 90° increments
- A line strainer must be used to protect the meter



| Description | Specification |
|----------------------|--------------------------|
| OGM 1" Aluminium | 120L/min |
| OGM 1 1/2" Aluminium | 250L/min |
| OGM 2" Cast Iron | 300L/min Flanged version |

Piisi 1" Flow Meter K33/K44



- Not suitable for petrol, dry solvents and gravityfeed
- Robust nutating disc flow meter shows up to 999 litres
- Option Four digit counter version
- 20 - 120L/min. 1" BSPF ports. Ideal for pumped systems
- Max. pressure 10bar
- Accuracy of ±1% with adjustable calibration
- Aluminium housing & cover
- 3 digit register (4 digit available) 6 digit non resettable totaliser
- Front face can be rotated in 90° increments
- Available 10:1 pulser fitted to 4 digit version only
- Use Piisi line strainer to protect meter
- Not approved for resale



| Description | Specification |
|-------------------|------------------|
| K33 three digit | 1" flow 120L/min |
| K44 four digit | As above |
| K44 pulse 0.1 ppl | As above |

Piisi 1" ATEX flow Meter K33



- 3 Digit partial indicator (max 999 litres) total 6 digits
- ATEX APPROVED for petrol, paraffin and diesel
- Flow rates 20 - 120L/min
- Accuracy ±1%
- Repeatability ±0.3%
- Operating pressure 3.5 bar
- Burst pressure 28 bar
- On site calibratable, easy to install inline flex or rigid piping and on pumps



| Description | Specification |
|-------------|----------------------------------|
| F000570020 | 3 digit 25mm Mechanical K33-ATEX |

Piisi Mechanical Oil Gear Flow Meter

- Robust oval gear type meter max visc. SAE 40
- ½”NPT process connections - 30L/min
- Max. pressure 70bar
- Accuracy ±1%, max temp 60°C
- Aluminium construction, Acetic resin rotors
- Option inlet strainer and nozzle & anti drip flex/rigid spout



Piisi Oval Gear Flow Meter

- Can be used with antifreeze
- Robust oval gear type meter shows up to 99999 litres
- Supplied c/w BSPF inlet & outlet flanges
- Max. pressure range dependant on model
- Accuracy ±0.5%, max temp 60°C
- Aluminium construction, Acetic resin rotors
- Electronic display with 5 digit register. 8 digit totaliser
- Powered by 2 x AAAbatteries
- Option inlet strainer
- Not approved for resale



| Description | Specification |
|---------------|----------------------------|
| K600/3 Oil | ¾” flow 6-60L/min 70bar |
| K600/3 Diesel | 1” flow 10-100L/min 30bar |
| K600/4 | 1½” flow 15-150L/min 20bar |

Piisi Oval Gear Flow Meter

- Can be used with antifreeze
- Robust oval gear type meter shows up to 99999 litres
- BSPF process connections
- Max. pressure 70bar
- Accuracy ±0.5%, max temp 60°C
- Aluminium construction, Acetic resin rotors
- Electronic display with 5 digit register. 8 digit totaliser
- Powered by 2 x AAAbatteries
- Option inlet strainer
- Not approved for resale



| Description | Specification |
|-----------------|-------------------|
| K400 Oil | ½” flow 1-30L/min |
| K400 Windscreen | ½” flow 1-30L/min |

FLOW METERS

MECHANICAL • ELECTRONIC

Piusi Oval Gear Flow Meter

- Can be used with antifreeze
- Robust oval gear type meter shows up to 9999 litres
- BSPF process connections
- Max. pressure 550bar
- Accuracy $\pm 0.5\%$, max temp 60°C
- Aluminium construction, Acetic resin rotors
- Electronic display with 4 digit register. 6 digit totaliser
- Powered by 2 x AAA batteries
- Option inlet strainer



| Description | Specification |
|------------------------|-----------------------------------|
| K200 Meter c/w display | $\frac{1}{8}$ " flow 0.1-2.5L/min |
| Grease Meter | $\frac{1}{8}$ " flow - 550bar |

Raasm $\frac{1}{2}$ " Oval Gear Digital Meters

- Can be used with antifreeze
- Flow rates 40L/min
- Accuracy 0.3% to 0.5%
- Repeatability $\pm 0.3\%$
- Operating pressure 70 bar
- Burst pressure 200 bar
- On site calibratable, easy to install inline flex or rigid piping and on pumps



| Description | Specification |
|-------------|--|
| 37780 | $\frac{1}{2}$ " BSP Digital meter 35L/min oils ,diesel |
| 37785 | $\frac{1}{2}$ " BSP Digital meter 40L/min for antifreeze |

Piusi 1" Electronic Turbine Meter

- 5 - 120L/min. 1" BSP ports
- Max. pressure 20bar
- Accuracy $\pm 1\%$. Polypropylene housing
- Battery powered LCD display 5 fig resettable total
- Designed to fit inline with the delivery hose or pipework
- Turbine flowmeter. Weight 400g
- Option inlet strainer



| Description | Specification |
|-------------|------------------|
| K24 | 1" flow 120L/min |

Piusi 1" K24 Electronic ATEX turbine meter Aluminium body



- Specify when ordering required for petrol, paraffin and diesel
- Screen can be adjusted for various positions for easy reading
- Flow rates 20 - 120L/min
- Accuracy $\pm 1\%$
- Repeatability $\pm 0.2\%$
- Operating pressure 10 bar
- Burst pressure 30 bar
- Calibratable
- Available in pulser version



| Description | Specification |
|-------------|--|
| F00408U10 | K24 1" M/F Thread for Diesel, Petrol, Paraffin |
| F00408100 | K24 1" M/F Thread for Diesel |
| F00408200 | K24 1" M/F Pulser Version 96 pulses/ltr |

Tokico Double Case PD Industrial Flow Meters



- Robust Roots Positive Displacement mechanical design
- Low pressure loss, long service life
- Calibrated using gears to 0.5%, Option calibrator available
- Materials: aluminium & cast iron
- Max pressure 10bar, JIS flange
- Max temperature 100°C Option high temperature
- Sizes range from 1" to 16"
- Option accessories inc. valves, air elimination & counters, Setstop counter, ticket printer, pulse output
- A line strainer must be used to protect the meter



| Description | Specification |
|-------------------------|-----------------------------|
| FGB 20 - 3/4" | 20L/min intermittent. Max |
| FGB 25 - 1" | 50L/min intermittent. Max |
| FRO 40 Flanged - 1 1/2" | 130L/min intermittent. Max |
| FRO 50 Flanged - 2" | 300L/min intermittent. Max |
| FRO 80 Flanged - 3" | 750L/min intermittent. Max |
| FRA 100 Flanged - 4" | 833L/min intermittent. Max |
| FRA 150 Flanged - 6" | 2000L/min intermittent. Max |
| Meters sized to 16" | |

FLOW METERS

ELECTRONIC • BULK

Proflow Truck PD Flow Meters

- Robust Positive Displacement mechanical design
- Low pressure loss, long service life
- Calibrator adjustable to 0.25% custody accuracy
- Materials: cast iron, aluminium
- Max pressure 10bar (PTM-100 = 5bar)
- Max temperature 80°C
- Sizes range from 50mm to 100mm
- Wide range of accessories inc. valves, air elimination & counters, Setstop counter, ticket printer, pulse output



| Description | Specification |
|-------------|---------------|
| PTM-50 | 38-380L/min |
| PTM-80 | 75-750L/min |
| PTM-100 | 150-1500L/min |

Proflow Bulk PD Flow Meters

- Suitable for refined aviation & bunkering fuels, chlorinated solvents, selected chemicals, agricultural oils, pharmaceutical, LPG etc.
- Robust positive displacement mechanical design
- Low pressure loss, long service life
- Calibrator adjustable to 0.25% custody accuracy
- Materials: aluminium, S/S & cast iron
- Max pressure 10bar (LPG 19bar)
- Max temperature 80°C
- Sizes range from 40mm to 150mm
- Wide range of accessories inc. valves, air elimination & counters, Setstop counter, ticket printer, pulse output



| Description | Specification |
|-------------------|-----------------|
| PBM - 40 (40mm) | 25 - 250L/min |
| PBM - 50 (50mm) | 55 - 550L/min |
| PBM - 80 (80mm) | 75 - 750L/min |
| PBM - 100 (100mm) | 130 - 1300L/min |
| PBM - 150 (150mm) | 300 - 3000L/min |

ACCESSORIES

Piuisi Meter & Pump Strainer



- Designed to connect to Piuisi meters and pump flange
- Inlet & outlet 90°, bolt on type
- Aluminium body with 250 micron stainless steel strainer mesh



| Description | Specification |
|-------------------|------------------|
| 895 line strainer | 1" flow 120L/min |

Large Numeral Counter (LNC)

- Mechanical counter to suit Proflow PD flow meters totalises meter total volume accurately to custody standards
- Five Large numeral resettable display, 8 digit non reset total
- Max speed of 250RPM of the right hand wheel
- Aluminium body and Acetal resin components
- Litre or Dekalitre bezel
- Option Pulse output on RHWheel 10 to 100 resolution



| Description | Specification |
|--------------------|---------------|
| 7887 LNC | 5 digit |
| Bezel – Litre | |
| Bezel – Dekalitres | |

Ticket Printer (with Cover)

- Mechanical Ticket Printer to suit Proflow LNC
- Generates a imprinted record of flow transaction
- Accumulative Total or Resettable
- Max speed of 250RPM of the right hand wheel
- Aluminium body and wheels



Set Stop Counter

- Mechanical counter to suit Proflow PD flow LNC's
- Five Large numeral resettable display
- Max speed of 250RPM of the right hand wheel
- Aluminium body and Acetal resin components
- Two stage valve closure via mechanical link
- Option pump start switch SPDT



PUMPS

PNEUMATIC • HAND • BULK • ELECTRICAL



| Series no: | Description | Specification |
|-------------|------------------------|--|
| 500 Series | 1:1 ratio, 35L/min | Low & medium viscosity liquids, hydraulic fluid, gas oil, antifreeze, waste oil, for distances <15m |
| 600 Series | 1:1 ratio, 23L/min | Low & medium viscosity liquids, hydraulic fluid, gas oil, antifreeze, waste oil, for distances <15m |
| 650 Series | 1:1 ratio, 40L/min | Low & medium viscosity liquids, hydraulic fluid, gas oil, waste oil, for distances <15m |
| 600 Series | 1:1 ratio, 30L/min | Suitable for antifreeze & windshield fluid, for distances 50 - 100m |
| 900 Series | 2:1 ratio, 95L/min | Low (distance 50 - 100m) & medium (distance 15 - 50m) viscosity liquids, hydraulic fluid, gas oil, antifreeze (distance 50 - 100m), waste oil |
| 500 Series | 3:1 ratio, 20L/min | Low & medium viscosity liquids, hydraulic fluid, gas oil, antifreeze, waste oil, for distances 50 -100m |
| 600 Series | 3:1 ratio, 14L/min | Low & medium viscosity liquids, hydraulic fluid, gas oil, antifreeze, waste oil, for distances 50 -100m |
| 650 Series | 5:1 ratio, 18L/min | Low (distance 100 - 200m), Medium (distance 100 - 200m), High (distance 50 - 100m), viscosity liquids, hydraulic fluid, gas oil, antifreeze (distance 50 - 100m), waste oil. Also suitable for medium and high viscosity greases (distance <15m) |
| 900 Series | 5:1 ratio, 45L/min | Low (distance 100 - 200m, Medium (distance 100 - 200m), High (distance 50 - 100m) viscosity liquids, hydraulic fluid, gas oil, waste oil and gearbox oil |
| 900 Series | 7:1 ratio, 30L/min | Low (distance >200m), Medium (distance >200m), High (distance 100 - 200m) viscosity liquids, hydraulic fluid, gas oil, waste oil & gearbox oil |
| 600 Series | 50:1 ratio, 1500g/min | Medium & high viscosity greases (distance 50 - 100m) |
| 700 Series | 65:1 ratio, 1900g/min | Medium & high viscosity greases (distance >100m) |
| 1200 Series | 40:1 ratio, 10000g/min | Medium & high viscosity greases (distance >100m) |

Air Operated Oil Pumps - Max Inlet Pressure 8bar



| Series no: | Description | Specification | | |
|---------------------------------------|----------------|---------------|-----------|--|
| IMEX | | | | |
| 1:1 Ratio stub pump/210L drum version | 18L/min | ¼" air inlet | ¾" outlet | |
| 3:1 Ratio stub pump/210L drum version | 12 or 28 L/min | ¼" air inlet | ½" outlet | |
| 5:1 Ratio stub pump/210L drum version | 14 or 15L/min | ¼" air inlet | ½" outlet | |
| RAASM | | | | |
| 1:1 Ratio stub pump/210L drum version | 23 - 40L/min | ¼" air inlet | ¾" outlet | |
| 3:1 Ratio stub pump/210L drum version | Std 14L/min | ¼" air inlet | ½" outlet | |
| 5:1 Ratio stub pump/210L drum version | Std 20L/min | ¼" air inlet | ½" outlet | |
| 5:1 Ratio stub pump/210L drum version | High 45L/min | ½" air inlet | ¾" outlet | |



Various other pump units available on request

Air Operated Grease Pumps - Max Inlet Pressure 8bar



| Series no: | Description | Specification | | |
|-------------|-------------------------------------|---------------|-----------|--|
| IMEX 15kg | 50:1 ratio 1.5kg/min for 15kg drum | ¼" air inlet | ¾" outlet | |
| IMEX 50kg | 50:1 ratio 1.5kg/min for 15kg drum | ¼" air inlet | ¾" outlet | |
| IMEX 180kg | 50:1 ratio 1.5kg/min for 15kg drum | ¼" air inlet | ¾" outlet | |
| RAASM 15kg | 50:1 Ratio 1.5kg/min for 15kg drum | ¼" air inlet | ¾" outlet | |
| | 65:1 Ratio 1.9kg/min for 15kg drum | ¼" air inlet | ¾" outlet | |
| RAASM 50kg | 45:1 Ratio 4.5kg/min for 15kg drum | ½" air inlet | ½" outlet | |
| | 50:1 Ratio 1.5kg/min for 50kg drum | ¼" air inlet | ¾" outlet | |
| RAASM 180kg | 65:1 Ratio 1.9kg/min for 50kg drum | ¼" air inlet | ¾" outlet | |
| | 50:1 Ratio 1.5kg/min for 180kg drum | ¼" air inlet | ¾" outlet | |
| RAASM 180kg | Ratio 1.9kg/min for 180kg drum | ¼" air inlet | ¾" outlet | |
| | 75:1 Ratio 4.5kg/min for 180kg drum | ½" air inlet | ½" outlet | |
| | 40:1 Ratio 10kg/min for 180kg drum | ½" air inlet | ½" outlet | |



Various other pump units available on request

Manual High Pressure Grease Pumps



GR. Hand Operated

- High pressure, direct feed grease pump
- C/w 13kg drum and Rubber edged follower plate
- 1.5m high pressure outlet hose & 4 jaw connector
- Air operated version also available

GR. Foot Operated

- C/w 13kg Drum and Rubber edged follower plate
- 1.2m outlet hose & quick release female connector



G-Gun Grease Dispenser



- Two-stage self-priming pump delivers 3ml per stroke up to 600bar and copes with air pockets
- Pumps up to No2 NLGI consistency pumpable greases
- Follower plate only required for special conditions
- Foot-operated, convenient for one-man operation
- Pressure return valve and GCoupler saves grease, mess and also money



Pneumatic Mobile Trolleys for Oil & Grease



- Ideal for use in workshops, mining & automotive
- Buna N seals
- Carbon Steel construction Cad. plated
- Supplied with 4m hose
- Grease unit supplied with cover, follower plate, gun & swivel
- Option with or without trolley & hose reel
- Max air inlet pressure 8bar
- Air pressure ratio from 50:1, 65:1 & 75:1 ratio for grease
- Available in drum sizes 15, 18, 50 & 180kg's for grease
- 210L Oil Drum versions available with 1:1, 3:1 or 5:1 pump options
- Oil unit supplied with/without hand held oil metered gun



| Description | Specification |
|-----------------------------|-----------------------------|
| S600 - Pneumatic grease kit | 50:1 ratio flow 1500gr/min |
| S700 - Pneumatic grease kit | 65:1 ration flow 1900gr/min |

Raasm Single Operation Vehicle Brake & Clutch Bleeder

- Bleeding of vehicles and clutches by one person
- Air Operated either connected or energised
- Suitable for systems with braking systems and ABS
- Suitable for use on all major known brand vehicles
- Comes standard with common set of reservoir caps



| Description | Specification |
|-------------|--|
| RM10805 | 5L Tank Capacity Brake bleeder with CAPS |

DIAPHRAGM PUMPS

Diaphragm pumps (ratio 1:1) for transfer industrial fluids compatible with the materials of the pumps, made from die cast aluminium or moulding injected polypropylene, with high quality components, they ensure lasting and reliable operation even in extreme conditions.

Raasm 1" Diaphragm Pump – 170L/m

- Max working pressure 8bar
- Flow rate 170L/min @ 1.6m³/min (1200L/min) max air consumption
- Air inlet connections F 3/8" G inlet
- Fluid connections: F 1 1/4" G inlet and 1" G outlet



Raasm 2" Diaphragm Pump – 610L/m

- Max working pressure 8bar inlet
- Flow rate 610L/min @ 4m³/min max air consumption
- Air inlet connections F ¾" G inlet
- Fluid connections: F 2 ½" G inlet and F 2" G outlet



Raasm ½" Diaphragm Pump – 60L/m

- Max working pressure 8bar inlet
- Flow rate 60L/min @ 0.5m³/min (400L/min) max air consumption
- Air inlet connections F ¾" G inlet
- Fluid connections: F ¾" (F1" G for drum) and F ½" G outlet



Rotary Drum Pump

- Compact version cast iron rotary action drum pump
- 1 piece suction pipe c/w mesh
- Capable of up to 25L/min
- 2" BSPM bung adaptor
- Available singly or in cartons of 5



| Description | Specification |
|-------------|---------------|
| MS25 | 25L/min |

Hi Capacity Heavy Duty Piston Pump

- Capable of up to 75L/min/100 strokes
- Lightweight aluminium body with stainless liner
- Teflon shaft packing/nitrile seals. 1" BSPF inlet. ¾" BSPF outlet
- Padlock facility prevents unauthorized use
- Double acting piston action pumps on both strokes
- Comprises of pump, telescopic suction pipe, 2.4m outlet hose & spout



| Description | Specification |
|-------------|-------------------------|
| FR152 | 75L/min per 100 strokes |

PUMPS

DIAPHRAGM • HAND • ELECTRICAL

Wing Pumps

- Semi rotary double acting
- Cast iron body with brass internals
- Flanged inline threaded ports
- Note: Never mount horizontally



| Description | Specification |
|--------------|---------------|
| ½" BSP (KO) | ½" 11L/min |
| ¾" BSP (K1) | ¾" 17L/min |
| 1" BSP (K2) | 1" 22L/min |
| 1½" BSP (K5) | 1½" 52L/min |

Proflow Rotary Vane Pump

- Self priming rotary vane PD pump
- Modular Iron body c/w self lubricating vanes
- Internal by-pass valve, mechanical seal in Viton
- Temperature 150°C max 10bar pressure
- Option metal vanes, dual shaft version (65mm only), "T" suction strainer
- Base made to order, fitted with electrical motor, gearbox (where applicable)
- CAN BE COUPLED TO DIFFERENT MOTOR DRIVES, ELECTRICAL, HYDRAULIC, PTO, AIR etc.



| Description | Specification |
|-------------|-------------------|
| PYB-40 | 1½" flow 140L/min |
| PYB-50 | 2" flow 300L/min |
| PYB-65 | 2½" flow 500L/min |
| PYB-80 | 3" flow 1000L/min |
| PYB-100 | 4" flow 1800L/min |

Battery Transfer Pumps

- Ideal for mounting into plant equipment, excavators etc
- Max. flow 40L/min. ¾" BSPF ports. Choose 12V or 24V
- Direct drive vane pumping unit with bypass valve
- Foot mounting plate. Weatherproof to IP54 for outdoor use
- C/w switch, carry handle, 2m long cable & crocclips
- Max. run time 30 mins



| Description | Specification |
|-------------|-----------------------------|
| Carry 12vdc | 12V pump c/w switch 50L/min |
| Carry 24vdc | 24V pump c/w switch 50L/min |

Battery High Speed Transfer Pumps



- Ideal for mounting into plant equipment/excavators etc
- Max. flow 70L/min on 24V. 1" BSPF ports. Choose 12V or 24V
- Direct drive vane pumping unit with bypass valve
- Foot mounting plate
- Weatherproof to IP54 for outdoor use
- Max. run time 30 mins



Battery High Speed Transfer Bi-Pumps



- Max. flow 80L/min. Choose 12V or 24V
- 1" BSPF inlet & outlet flanges
- Piusi direct drive vane pumping unit with bypass valve
- Option Switch, 2m long battery cable & clips
- Weatherproof to IP54 for outdoor use
- Max. run time 30 mins
- Pump kit includes hoses/fitting & manual nozzle



| Description | Specification |
|---------------|-----------------------|
| Bi Pump 12Vdc | 12V pump only 80L/min |
| Bi Pump 24Vdc | 24V pump only 80L/min |

Battery Drum Mount Pump Kits (DC)



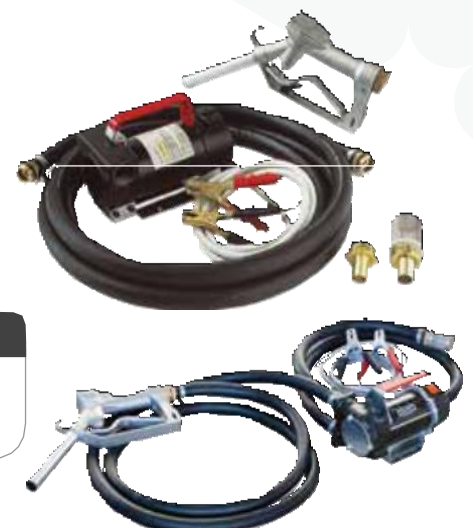
- Max. flow 50L/min. Empties 205 litre drum in approx 5 mins
- Aluminium manual nozzle with inlet swivel. Choose 12V or 24V
- 4m long delivery hose with robust swaged ends
- 2" BSPM drum adaptor, telescopic suction pipe & strainer
- Direct drive vane pumping unit with bypass valve
- 2m long battery cable & croc clips
- Switch, carry handle & nozzle holster
- Weatherproof to IP54 to outdoor use
- Max. run time 30 mins



Battery Portable Pump Kits



- Max. flow 50L/min. Empties 205 litre drum in approx 5 mins
- Aluminium manual nozzle with inlet swivel. Choose 12V or 24V
- 4m long delivery hose with robust swaged ends
- Direct drive vane pumping unit with bypass valve
- 2m long battery cable & croc clips
- Switch & carry handle
- Weatherproof to IP54 for outdoor use. Foot mounting plate
- Max. run time 30 mins



| Description | Specification |
|-------------|--------------------------|
| 225000 | 12V portable kit 50L/min |
| 226000 | 24V portable kit 50L/min |



Piisi AC "E" Series Diesel Transfer Pumps

- Pumping speeds 75 or 100L/min. 230V
- Direct drive, self priming, vane pumping units. 1" BSPF ports
- Switch & 2m long mains cable. Integral filter & bypass
- Weatherproof to IP55 for outdoor use
- Continuously rated motor with thermal cut out
- Also available in 380Vac



| Description | Specification |
|-------------|---------------|
| E80 | 75L/min |
| E120 | 100L/min |

Piisi AC Panther Diesel Transfer Pumps

- Pumping speeds 56, 68 or 72L/min. 230V
- Direct drive, self priming, vane pumping units. 1" BSPF ports
- Switch & 2m long mains cable. Integral filter & bypass
- Weatherproof to IP55 for outdoor use
- Continuously rated motor with thermal cut out
- Also available in 380Vac



| Description | Specification |
|-------------|-------------------|
| Panther 56 | 230V pump 56L/min |
| Panther 72 | 230V pump 72L/min |

AC Diesel Drum Kit

- This kit of parts fits directly into a 2" socket, for use on 210L Drums & tanks up to 1.5m deep
- Comprises
 - Pump
 - 4m x 1" outlet hose
 - Nozzle holster
 - Tank/pump connector
 - Option Flow meter
 - Nozzle
 - Suction hose & foot valve
- Option three or four digit flow meter and filter
- Available in various flow rate and voltage options



Battery Viscomat DC Pumps for Oil

- Max. flow 10L/min
- Direct drive gear pumping unit with bypass valve
- 2m long battery cable & croc clips. Max. run time 30mins
- Available in 12V and 24V versions
- Drum pump kit includes hoses/fittings & nozzle



AC Piusi Vane Pump for Oil



- Max. flow 25 - 50L/min
- Vane pump unit
- Switch & bypass valve
- Foot mounting plate. Weatherproof to IP55
- Max. suction lift 2.5m when used with non return valve
- Continuously rated motor with thermal cut out
- Also available in 380Vac



| Description | Specification |
|-------------|----------------|
| Viscomat 70 | 25L/min @ 6bar |
| Viscomat 90 | 50L/min @ 5bar |

AC Piusi Gear Pump for Oil



- Max. flow 14L/min between 12 - 25bar
- Gear pump unit
- Switch & bypass valve
- Foot mounting plate. Weatherproof to IP55
- Continuously rated motor with thermal cut out
- Also available in 380Vac



| Description | Specification |
|--------------|-----------------|
| Viscomat 200 | 9L/min @ 12bar |
| Viscomat 230 | 14L/min @ 12bar |
| Viscomat 350 | 9L/min @ 25bar |

Piusi Pitsop 12V Pump and Hose Reel Dispenser

- DC 12V dispensing pump
- Pump delivers 45L/min
- 10m x 3/4" delivery hose on hose reel
- Filter for removing dirt particles and water from diesel
- 1" Automatic dispensing nozzle
- Sturdy metal supporting structure
- Cable with crocodile clamps



| Description | Specification |
|------------------|--------------------|
| Piusi Pitstop 45 | 45L/min dispensing |

Filrite Heavy Duty 220Vac Flameproof pump

- Heavy duty self priming vane pump for direct drum or tank
- Switch & bypass valve
- Flow rate 76L/min (1/2hp motor)
- ATEX approved for use in hazardous areas
- Hose & nozzle included



| Description | Specification |
|-------------|-------------------------------|
| PEAC-701 | 220v 76L/m pump for 210L drum |

PUMPS

ELECTRICAL (AC/DC, OIL AND DIESEL)



Filrite Battery DC Flameproof Pump Heavy Duty

- Choose 12V or 24V
- Heavy duty vane pump for direct drum or tank mounting
- Max. flow rates 45-56L/min
- Switch & bypass valve
- 30min duty cycle with thermal cut out
- ATEX approved for use hazardous areas
- Option Flow meter can be fitted to pump



Piusi 12V DC and 220v drum type flame proof pump

- Sturdy and compact design ,fittings for 210ltr drum mounting
- ATEX APPROVED for petrol, paraffin and diesel
- Cast iron body and self-priming pump
- Flanged components allow replacing quick and easy without sealant needed
- Flow rates of 50L/min
- Bypass, Thermal protection , non-return and PRV included
- 70L/min Water absorbing/Dirt Removal filter included
- 30 Minute run cycle
- Option Flow meter can be fitted to pump



| Description | Specification |
|-------------|--|
| F00372000 | 12V 50L/min Pump, hose, filter manual nozzle |
| F00374000 | 220V Pump, hose, filter, manual nozzle |

Piusi 12V DC & AC 220V pump stand-alone flame proof pump



- Sturdy and compact design for 210ltr drum mounting OR foot mounting
- ATEX APPROVED for petrol, paraffin and diesel
- Cast iron body and self-priming pump
- Flow rates of 50L/min
- Bypass, Thermal protection, non-return and PRV included
- 70L/min Water absorbing / Dirt Removal filter included
- 30 Minute run cycle



| Description | Specification |
|-------------|-----------------------------|
| F00371000 | Ex50 12V 50L/min PUMP ONLY |
| F00373000 | EX50 220V 50L/min PUMP ONLY |

ACCESSORIES

Pump Accessories

- Wall mounting bracket for oil air stub pumps
- Wide range of pump accessories available

| Description | Specification |
|--------------|--|
| Air Services | Air filter regulator + Lubricator ¼", 3/8", ½", ¾", 1", 1½" 2" |
| Various | Wall mounting bracket |



Drip Tray for Oil Nozzles

- Modular drip tray
- Equipped with oil nozzle hook
- Removable drip tray
- Ideal to fit with hose reels, for holding the nozzle in place
- Keeps the wall & floor clean & safe



Grease Control Gun

- For use with air operated grease pumps
- Inlet connection ¼" BSPF
- Supplied c/w rigid spout & flexible outlet hose with 4 jaw connector
- Option Z swivel

| Description | Specification |
|--------------------|-----------------------|
| Grease control gun | Grease control gun ¼" |
| Swivel | Z swivel ¼" |
| Straight | ¼" |



Air Operated Grease Pump Accs.

- We supply 15kg, 50kg & 180kg air operated grease pump system kits from stock

| Description | Specification |
|----------------|-------------------------------|
| Drum cover | Drum cover for 15kg drum |
| Drum cover | Drum cover for 50kg drum |
| Drum cover | Drum cover for 180kg drum |
| Follower plate | Follower plate for 15kg drum |
| Follower plate | Follower plate for 50kg drum |
| Follower plate | Follower plate for 180kg drum |



Trolleys for Grease Drums

- Trolleys available for drums from 15kg-180kg and 210litre

| Description | Specification |
|-------------|---|
| 80035 | For 20 - 60kg grease drums |
| 80200 | For 180 - 210L drums |
| 80201 | For 180 - 210L drums - heavy duty to hold hose reel |



Why A Cim-Tek Filter?

The following points can all contribute to the contamination of good clean fuel supplied into bulk storage tanks.

RATE OF USAGE

The longer the fuel spends sitting in the tank it will build up contamination through condensation & microbiologic growth.

ABOVE OR BELOW GROUND TANKS

Condensation builds up when the tank breathes, i.e lets air in & out as fuel is used, replenished, & as the fuel shrinks & expands.

LOCATION OF TANK

An above ground tanksited in the sun will breathe more than a tank sited in a more sheltered location.

AGE OF THE TANK

The longer the tank has been in use, the greater the build up of internal silt & scale. Although this usually

collects out of harm's way at the bottom of the tank, deliveries to the tank stir it up.

FREQUENCY OF CLEANING

The more often the tank is cleaned out the less risk of contamination.

WEATHER TIGHTNESS OF TANKS

An offset fill pipe is much better than a direct manlid fill, but leaky vents, tank gauges & pipe joints can all let water in.

QUALITY OF FUEL PURCHASED

The fuel you dispense to your vehicles can only be as good as the fuel you buy. This can be easily controlled by buying from a reputable source.

Foot Valve & Strainer

- Combined foot valve & strainer
- Brass body with a steel strainer mesh
- Spring loaded valve poppet
- 1" BSPF connection 3/4", 1/2"



Fuel Filter – Water & Particle

- Removes water and dirt particles
- Replacement cartridges available
- Fits on outlet side only
- Aluminium head with disposable spin on filter elements
- 1" BSPF inline ports
- Standard element 30micron (10micron available)
- Max. flow 70-100L/min, max. pressure 50psi (3.4bar)
- Kit consists of head & one element (30micron)



Why A Cim-TekFilter?

- Contamination is rife in fuel storage tanks (caused by condensation, microbiological growth & sludge).
- These factors can cause engine down time (causing costly delays & expensive repair bills).
- Cim-Tek is a unique filter which absorbs water & particles or just particles (choose the version you require).
- Unlike ordinary bowl filters/traps these filters do not need regular manual draining to remain effective.
- When the filter starts to become full the flow rate will slow down (this is a sign that the filter needs replacing).
- Fits on the outlet side of fuel dispensers, choose gravity or pump, standard or high capacity versions.

Biodiesel filter – Water & Particle

- Removes water and dirt particles
- Replacement cartridges available
- Fits on outlet side only
- Aluminium head with disposable spin on filter elements
- 1" BSPF inlin ports
- Standard element 30micron (10micron available)
- Max. flow 70-100L/min, max. pressure 50psi (3.4bar)
- Kit consists of head & one element (30micron)

Fuel Filter – Particle Only

- Fits on outlet side only
- Aluminium filter head with disposable spin on filter elements
- 1" BSPF inline ports
- Filtration down to 10micron
- Max. flow 60-100L/min. Max. pressure 50psi (3.4bar)
- Kit consists of head & one element (10micron)
- Replacement cartridges available



HOSE REELS

Hose reels available in stainless steel, painted steel, plastic, open, enclosed, spring rewind, air rewind, hydraulic motor rewind and manual rewind. Hose reels can be supplied bare or with required hose length.

Stainless Steel Hose Reel

- Open reel ideal for use in workshops, mining & industry
- 304 stainless construction Viton seal
- Self retracting. For use in harsh or clean environments
- Up to 30m x 1" hose optional models available
- Max. pressure 150 or 200bar (product specific)
- Option swivel base
- Never connect rigid pipe work into inlet



Painted Steel Open Hose Reel

- Open reel ideal for use in workshops, mining & industry
- Spring rewind. Heavy duty steel construction painted
- Choose hose length required. Fully adjustable hose stop
- Supplied bare reel Option c/w hose & flexible inlet hose
- Mounting kit for wall, ceiling, bench or floor mount
- Working pressure 150-600bar
- Option swivel base reel
- Never connect rigid pipe work into inlet



Cased Reel

- Ideal for use with air tools & for water dispensing in garages
- Spring rewind. Strong rigid plastic construction. Can be padlocked
- Supplied c/w hose 11m x 1/4" BSPM ends & 1.5m flexible inlet hose
- Fully adjustable hose stop
- Max working pressure 290psi (20bar)
- Max temperature -20°C to +60°C
- Option available with wall support bracket



| Description | Specification |
|---------------------|-----------------|
| Air/Water hose reel | 1/4" x 11m hose |

HOSE REELS

HOSE REELS

Cased Reels

- Cased reel ideal for use in workshops, mining & industry
- Spring rewind. Heavy duty steel construction painted
- Choose hose length required. Fully adjustable hose stop
- Supplied c/w hose & 500mm flexible inlet hose
- Working pressure 150-600bar (model dependent)
- Option swivel base reel
- Never connect rigid pipe work into inlet



| Description | Specification |
|---------------------|-----------------|
| Air/Water hose reel | 1/2" x 15m hose |
| Air/Water hose reel | 3/8" x 15m hose |

IMEX High Capacity Reel for Diesel

- Self retracting. Steel construction, powder coated finish
- True 1" fluid path
- Has full flow swivel inlet to help prevent flow restrictions
- Max. working pressure 300psi (20bar)
- Never connect rigid pipe work into inlet



| Description | Specification |
|------------------------|--------------------|
| Carbon steel hose reel | With 8m x 1" hose |
| Carbon steel hose reel | With 15m x 1" hose |
| Carbon steel hose reel | No hose 1" F inlet |

IMEX Painted Steel Open Hose Reel

- Open reel ideal for use in workshops, mining & industry
- Spring rewind. Heavy duty steel construction painted
- Choose hose length required. Fully adjustable hose stop
- Mounting kit for wall, ceiling, bench or floor mount
- Working pressure 150 - 600bar
- Option swivel base reel
- Never connect rigid pipe work into inlet



DRAINERS

GRAVITY • SUCTION

Commercial Low Level Waste Oil Drainer



Engine oil can be drained under gravity into this unit. When full it can be wheeled to the bulk waste tank & unloaded using its own Integral air pump.

It features:

- 50 or 95L waste oil drainer with level gauge
- Large capacity drain bowl
- 1m discharge hose
- 1:1 air operated oil pump fitted to drainer on 95L version
- ¾" self seal oil coupling
- 2 fixed wheels, 2 castors & foot brake
- Option air filter regulator with water trap (air-frc) on 95L version



Commercial Pit Type Waste Oil Drainer



Pit waste oil drainers. Suitable for gravity draining of engine, gearbox and differential oil from all motor vehicles placed on a pit.

- Equipped with anti-splash screen which can be used as a support for draining oil filters
- Available in 65 and 110 litre capacity



Gravity Drainer



- Ideal for gravity draining of engine, gearbox & differential oils
- Used to drain oils from all motor vehicles on auto lifts or pits
- 13 litre collection bowl is height adjustable
- 65 - 80 and 90 litre tank capacity
- Equipped with level gauge
- Oversized funnel anti splash screen
- Removable tool tray
- Emptied by use of compressed air or suction pump



Combination Oil Suction Drainer



- Ideal to gravity drain oil or for use via the suction probes supplied
- Normally used in commercial vehicle applications for draining over 8 litres at a time
- 65, 80 and 90 litre capacity tank with level gauge
- 13 litre collection bowl capacity, height adjustable
- Supplied with a selection of suction probes
- Oversized funnel anti splash reen. Removable tool tray
- Empty the tank using compressed air or suction pump
- When using suction probes the oil must be hot, 70°C – 80°C



IMEX Gravity Drainer



- Ideal for gravity draining of engine, gearbox & differential oils
- Used to drain oils from all motor vehicles on auto lifts or pits
- 13 litre collection bowl is height adjustable
- 60 and 90 litre tank capacity
- Equipped with level gauge
- Removable tool tray
- Empty using compressed air or suction pump



Depuroil Filter & Transfer Unit



Depuroil is the ideal tool for decontaminating oil by removing suspended particles. The filtering unit is composed of a volumetric vane pump that extracts the oil to be purified, sending it through a high-filtering capacity cartridge filter that removes the impurities

- Suitable for use with oils up to SAE90
- Depuroil filter & 230V transfer pump, 25L/min
- Removes suspended particles to 10micron
- Portable c/w suction & outlet hose



DISPENSERS

MANUAL • AIR

Mobile Oil Dispensers

- Available in manual & air operated formats
- No continuous connection to air required
- 24 litre capacity
- Equipped with level gauge
- Comes complete with anti-splash funnel



| Description | Specification |
|------------------------|--|
| Manual dispenser | 24/65L capacity, level gauge, anti-splash funnel |
| Air operated dispenser | 24/65L capacity, level gauge, anti-splash funnel |

Piisi Mechanical Cube

- 230V self priming pump unit
- Nozzle operated off switch prevents motor damage
- Pumping speed 56L/min. Nozzle can be locked
- Meter accuracy of $\pm 1\%$
- Weatherproof to IP55. Integral filter, bypass valve
- Continuously rated motor with thermal cut out
- 4m x 1" delivery hose & automatic nozzle
- Dimensions 341mm(height) x 342mm(width) x 451mm(depth)
- Option HO₂ and/or particulate filter



| Description | Specification |
|-----------------|-------------------------|
| Mechanical cube | 230V 70L/min & pin code |

Piisi Mechanical Cube 70

- Flow-rate up to 70L/min
- Counter Precision $\pm 1\%$
- Continuous Operation
- Noise less than 70dB
- Technical Features
- Self-supporting structure in stamped sheet metal with anti-corrosion treatment and paint finish for exterior use
- Self-priming vane pump with mechanical seal, equipped with bypass, installed on anti-vibrating supports
- Self-ventilated, IP55 induction motor, with thermal protection
- Suction filter to protect the pump
- Oscillating disk, volumetric, mechanical meter
- Nozzle holder contained in the structure, equipped with a pump start/stop lever
- Automatic nozzle with flexible tubing and swivel joint
- Prepared for a direct connection to the drum by means of a 2" quick coupling





Piusi Self Service Diesel Pump

- Heavy duty pump, has a traditional robust cabinet
- Available in two versions, electronic control with magnetic keys for 80 users the other for 120 users. Pump speed at 90L/min
- Lockable nozzle holster to prevent unauthorised use
- Meter Oval gear, accurate to $\pm 0.5\%$
- Pumping unit Close coupled vane pump & integral filter
- Cabinet Suitable for above or below ground pipework
- Display LCD display with back light. Shows up to 999,9 litres, totaliser shows up to 999,999 litres
- Standard equipment Automatic nozzle, 3m anti static hose
- Option Base drip tray & hose reel
- For use on above or below ground storage tanks (with foot valve)
- Records date & time of dispensing & amount of fuel taken
- Stores up to 200 transactions before downloading is required
- Option PC software, key reader & 10 keys
- Includes manager key that downloads information to the keyreader & software on the PC (no hard wire link between the pump & PC is required). Requires RS232 connection

Piusi Mechanical K44 Self Service

The Self Service K44 models feature an easy to use, high precision mechanical meter that can be easily calibrated by the user

Technical Features

- Self-supporting structure in painted and treated plate metal
- Self-priming vane pump, equipped with bypass, installed on anti-vibration supports
- Induction motor, self-ventilated, IP55, with thermal protection
- Suction filter to protect the pump
- Absorption filter for eliminating the water from the diesel fuel
- Oscillating disk, volumetric, mechanical meter
- Nozzle holder provided in the structure and equipped with a pump stop lever
- Automatic nozzle with swivel joint and 4-metre flexible tubing
- Electric panel housed in the structure for connection to the mains and low-voltage control of auxiliary components



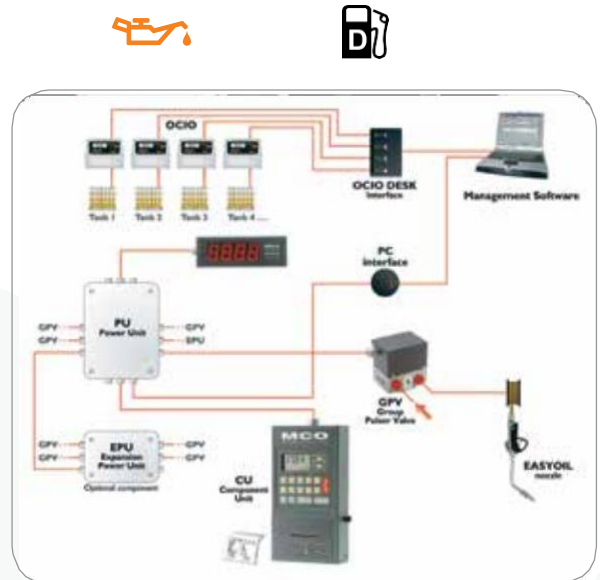
SYSTEMS

FLUID MANAGEMENT SYSTEMS

We offer efficient fuel management solutions that will significantly help you reduce your energy consumption and cut down on fuel expenditure through controls, over a period of time.

Piisi MCO Oil Management System

- Managing the dispensing of oil in the workshop environment
- Uses Microsoft Windows platform
- Updates tank oil inventory in multiple tanks and products
- Re-order level alarm for oil inventory
- Logs & stores in memory all loading /unloading transactions
- Organises jobs and dispensed oil by operator and/or job
- Limits access to oil by pre-authorized transactions
- Each module controls up to 12 reels
- Up to 900 users
- Hardware – GPV valve & integral flow meter, 24Vdc
- Accuracy $\pm 0.5\%$ reed switch contact
- 150 micron strainer
- Option high flow dual channel controlvalve



Description

MCO management systems
GPV – Meter and valve
MCO expansion unit

Specification

220Vac keypad & power supply
24vDC - 30L/min - 70bar
For additional 4 bays

Low Cost Fuel Management System

- A stand alone Fuel Management System for connecting to a pump
- Ideal for the small fleet users
- The (MCBOX), system is connected to the pump via the (K600/PM) pulse meter
- Option PC software, key reader & 10 keys ($cube70_{pc}$)
MC Box Control Panel Specification (MCBOX)
- Up to 80 users via pin or optional magnetic key
- Records date & time of dispensing & amount of fuel taken
- Stores up to 255 transactions before downloading is required
- Weatherproof for outdoor use
- Can limit fuel taken by use of the preset facility
- Switched 230Vac pump motor output
- Additional accessories available separately



LIQUIP TERMINAL EQUIPMENT

LOADING ARMS

- Bottom Loading Arms
- Top Loading Arms
- Vapour Recovery Arms
- Other Applications



BALANCE MECHANISMS

- Velvet Touch MK2
- Velvet Touch MK3
- LBM800



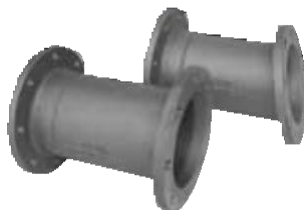
LOADING EQUIPMENT

- APIDP100 API Drain Plug
- ILS400 Strainer
- Sightglasses



SPOOLS AND HOSES

- Pipe Spools
- Coupler Spools
- Drop Hoses
- Drop Hose Covers



ISOLATING VALVES

- CVS110 Holdback Valve
- LBV450VGL Butterfly Valve



LIQUID COUPLERS

- APIRC Drybreak Couplers
- Bayonet Couplers



PARKING ADAPTORS

- PA200 API Parking Adaptor
- APIPA API Parking Adaptor
- PA100 API Parking Adaptor
- SPS100 Top Loading Arm Parking Adaptor
- VCFPA Vapour Coupler Parking Adaptor



LOADING COUPLERS

- API800 Automatic Couplers
- LA560 Top Loading Valve
- VCF500 Vapour Coupler
- VCF075W Vapour Coupler
- VCM450 Vapour Collection Adaptors



LIQUIP TERMINAL EQUIPMENT

PRODUCT OVERVIEW

OVERFILL PROTECTION MONITORS

- RM140 Series Multi Channel Overfill Monitor
- PD500 Series Single Channel Overfill Monitor



MONITOR ACCESSORIES

- GP100 Series Gantry Plug Assemblies
- JB100 Junction Box
- TPA4 Gantry Plug Parking Adaptor
- HTA Series Portable Testers



STORAGE TANK SYSTEMS

- Bottom Loading System
- Liquid Monitors



OVERFILL PROTECTION ACCESSORIES

- SMS102 Top Load Overfill
- SVR Vapour Cone
- Overfill Protection Sensors



SWIVELS

- VNS-A4 Straight Swivel
- VNC-A4VG Coupler Swivel
- VNI-A4VG Intermediate Swivel
- LCB4-1 Split Flange Base Swivel
- SJW Swivels
- SJF Swivels



OTHER ACCESSORIES

- VB100 Vacuum Breaker
- SD100 T-Deflector
- DB100 Drip Bucket
- VBS100-32 Proximity Sensor Holder



ELECTRONIC REGISTERS

- DFV100 Electronic Register



LIQUIP TANKER EQUIPMENT

VEHICLE SETUP

MANHOLES



VOH410 SERIES



VOH500 SERIES



VOH750 SERIES

FOOT VALVES



SLV5-ARO



SLV5CO

OUTLET VALVES

API490



API CAPS



OUTLET ADAPTORS

API MC SERIES



API RC

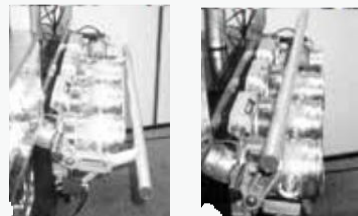
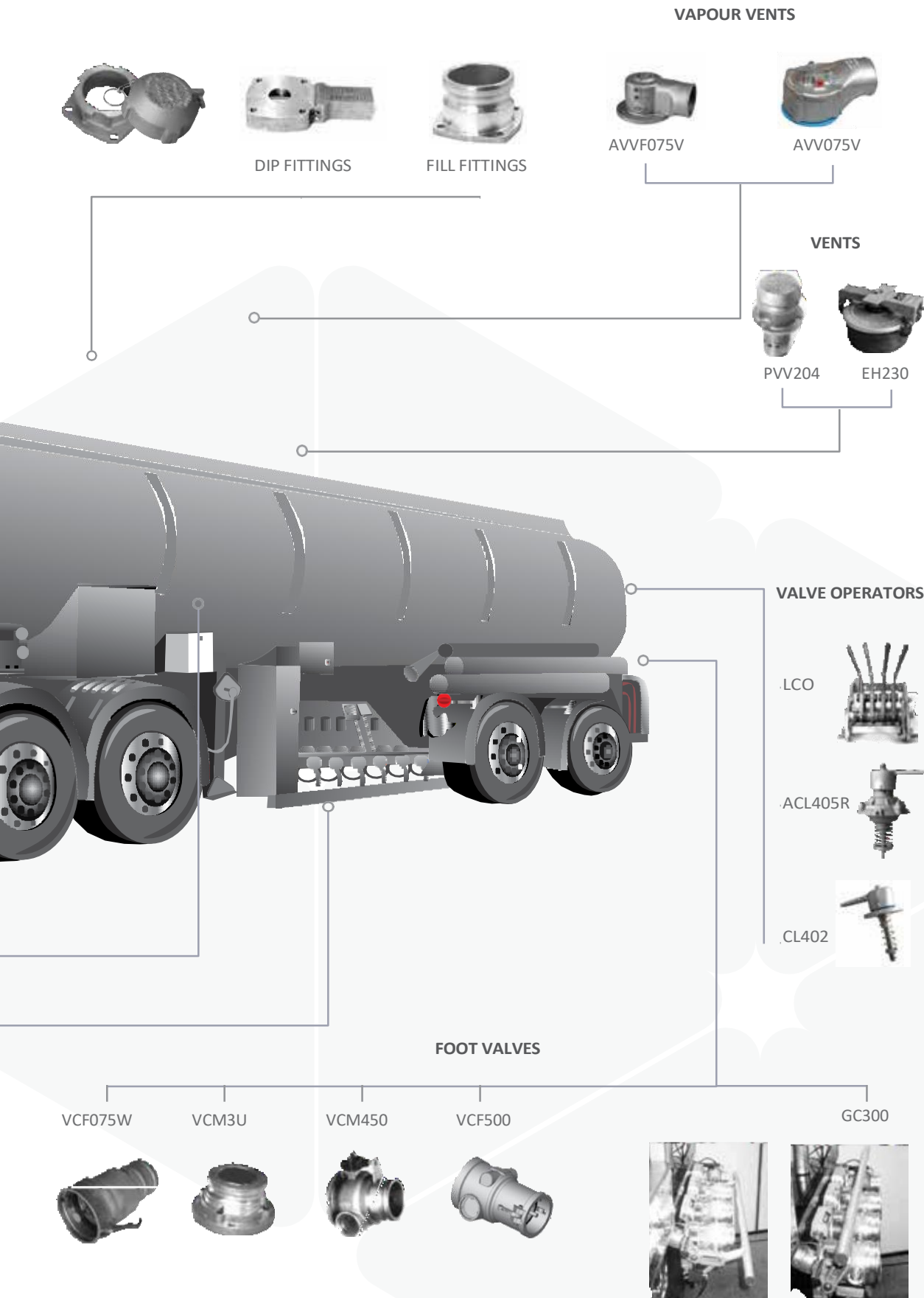


LBV SERIES VALVES



LIQUIP TANKER EQUIPMENT

BOTTOM LOAD AND VAPOUR RECOVERY EQUIPMENT





Core Brands of Time Access & Automotive Systems



HEAD OFFICE

JOHANNESBURG RANDBURG

TIME ACCESS AND AUTOMOTIVE SYSTEMS,
23 STEVENS ROAD, BLAIRGOWRIE,
RANDBURG,
South Africa

Tel: +27(0)11 326 4146

Fax: +27(0)11 781 4392

adriang@lantic.net

www.t-a-s.co.za

www.timeandautomotive.co.za

TAS